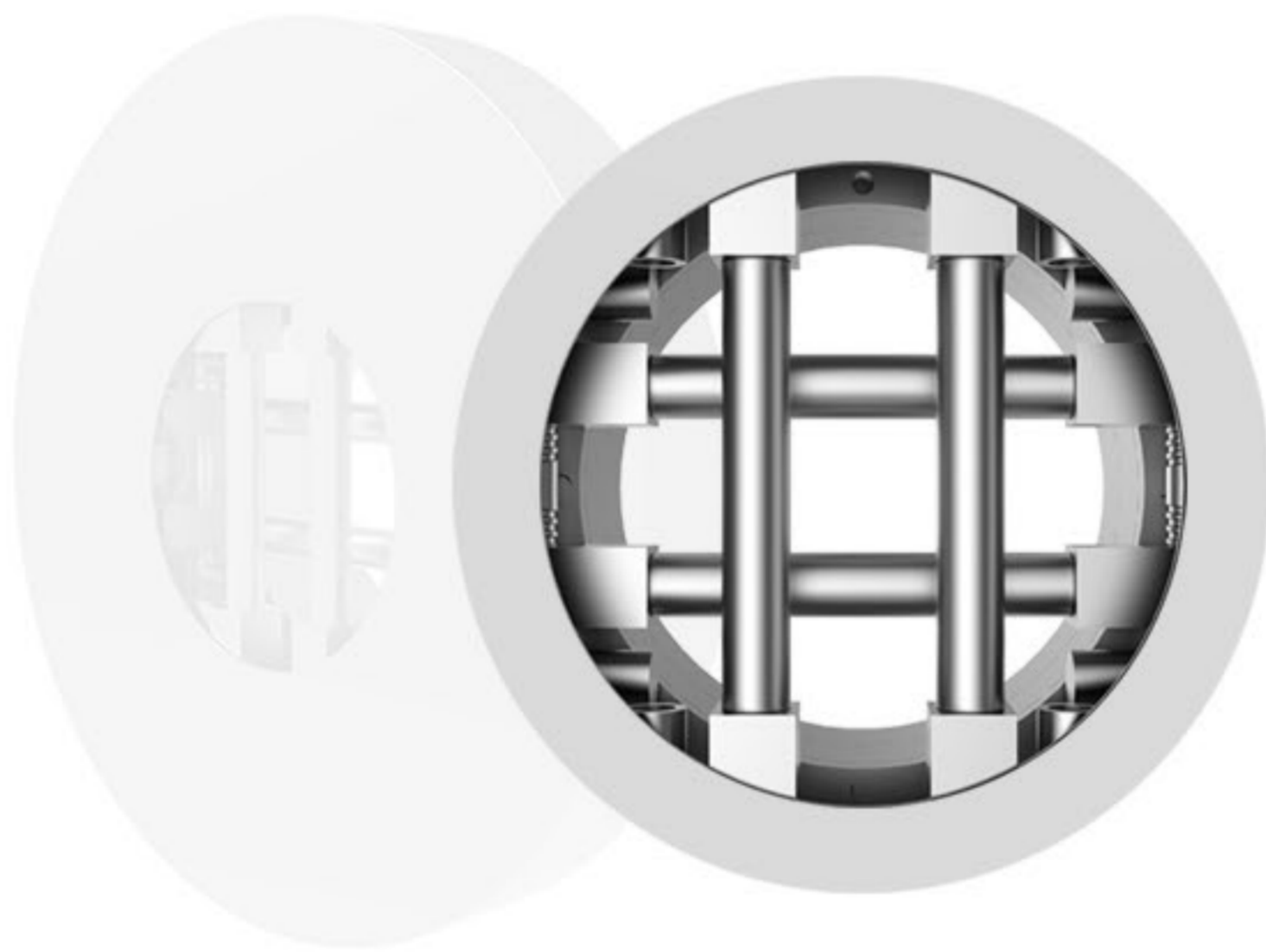


# LF60M

## PROFESSIONAL TUBE LASER CUTTING MACHINE



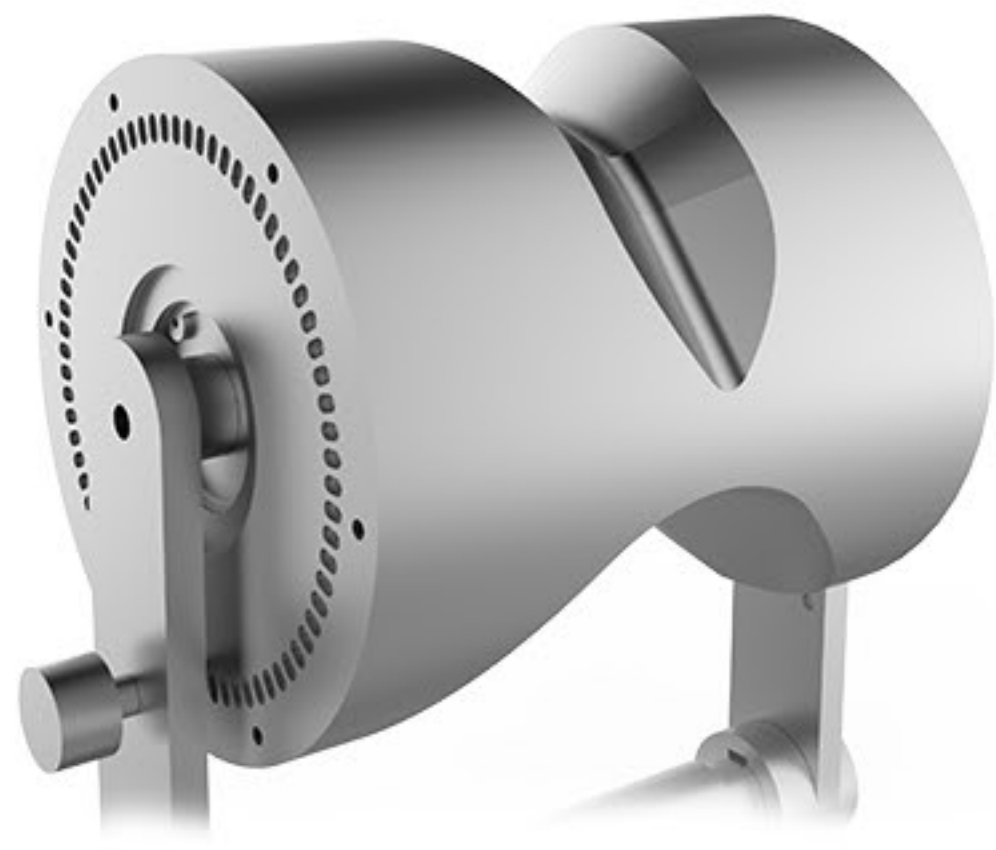
### Clamp Design

It adopts an electric clamp design on both sides and it can modulate the center automatically. The diagonal adjustable range is 20-200mm.

### Easy to Operate

It employs a wireless controller, with free control clamp pressure for easy control and operation, which can reduce pipe deformation.





## Fractional Automatic Support Installation

It employs intelligent tube support design, which can solve the deformation problems in the process of long tube cutting.

## Technical Parameters

Machine Model	LF60M
Laser Power	500W 750W 1000W 2000W 3000W 4000W(Optional)
Dimensions	11900*1580*2260mm
Machining Range	Hold diameter: $\Phi$ 20mm- $\Phi$ 220mm
Repeat Positioning Accuracy	$\pm$ 0.02mm/m
Specified Voltage and Frequency	380V/50Hz/60Hz

## Industry Applications

Take the oil industry for example, the main route of oil transport is the pipeline, and because of the characteristics of the oil itself, leading to the high quality requirements of the pipeline. While fiber laser cutting machine can achieve the pipes multi-angle precision processing to fulfil the oil transportation requirement.



## JINAN G.WEIKE SCIENCE & TECHNOLOGY CO.,LTD

In hi Tech square High-Tech Zone, Jinan,Shandong,China

E-mail: [wkcutt@163.com](mailto:wkcutt@163.com)

Hotline: 400-061-521

Fax: +86-0531-88912386